

Health Information Network Participant Locator Map Instructions

The Health Information Network (HIN) Participant Locator Map is a publicly available tool for healthcare providers, HINs, and stakeholders to identify the locations of HIN participating entities within the state of Missouri.

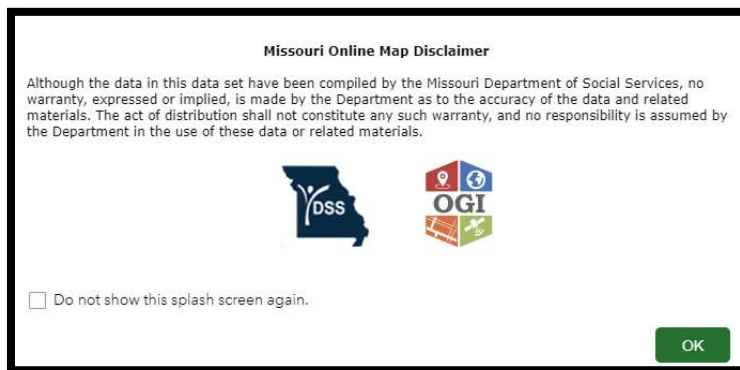
The entities represented in this map participate fully in health information exchange through one or more of Missouri's HINs. Full participation means they share data with other HIN participants in compliance with signed agreements and federal law.

HIN participation does change on a regular basis. The MO HealthNet Division plans to update this map at least quarterly.

Step One:

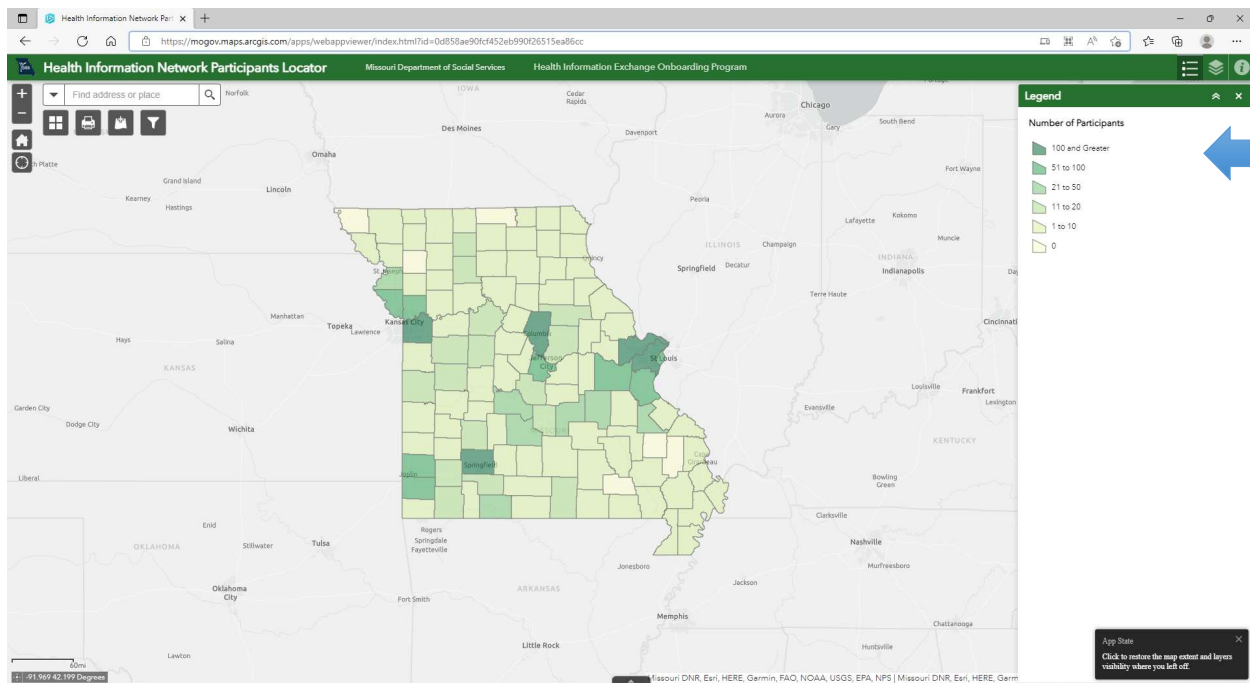
Paste link into browser [Health Information Network Participants Locator \(arcgis.com\)](https://arcgis.com).

This tool works in Microsoft Edge, Firefox, and Chrome. Click OK when the disclaimer box pops up – you can also check box to not show this message again in the future.



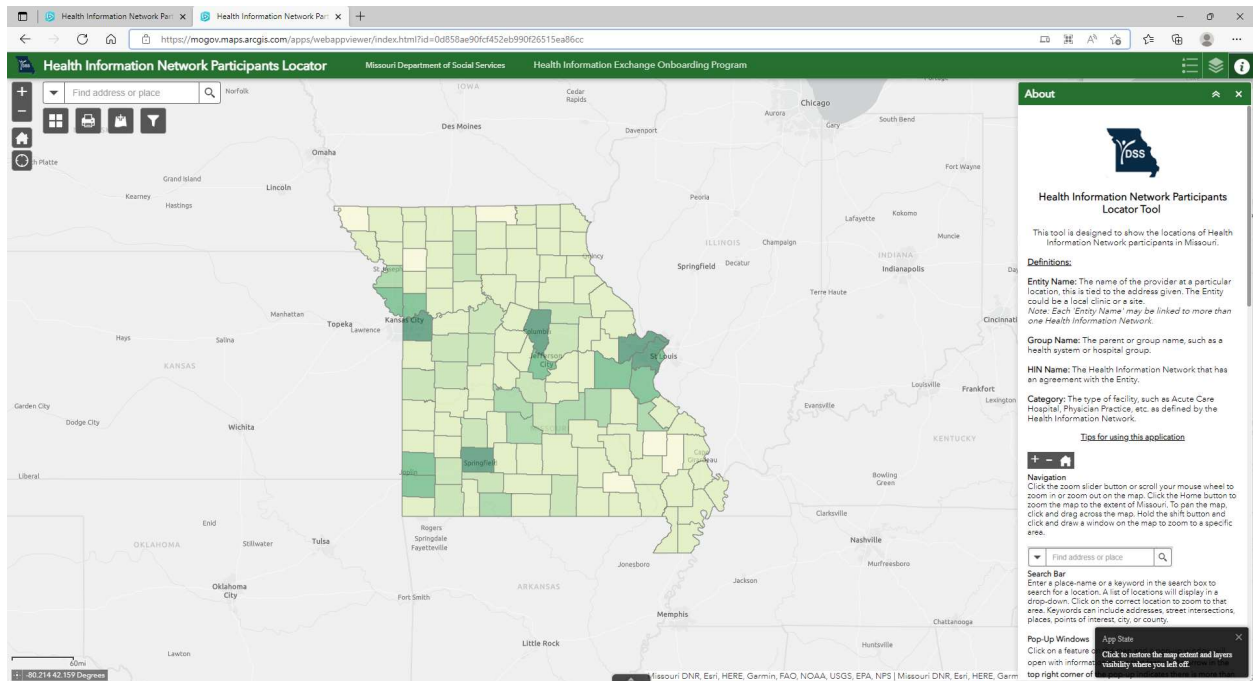
Step Two:

The initial view when the Locator Map is opened shows the number of HIN participants by county, see legend.



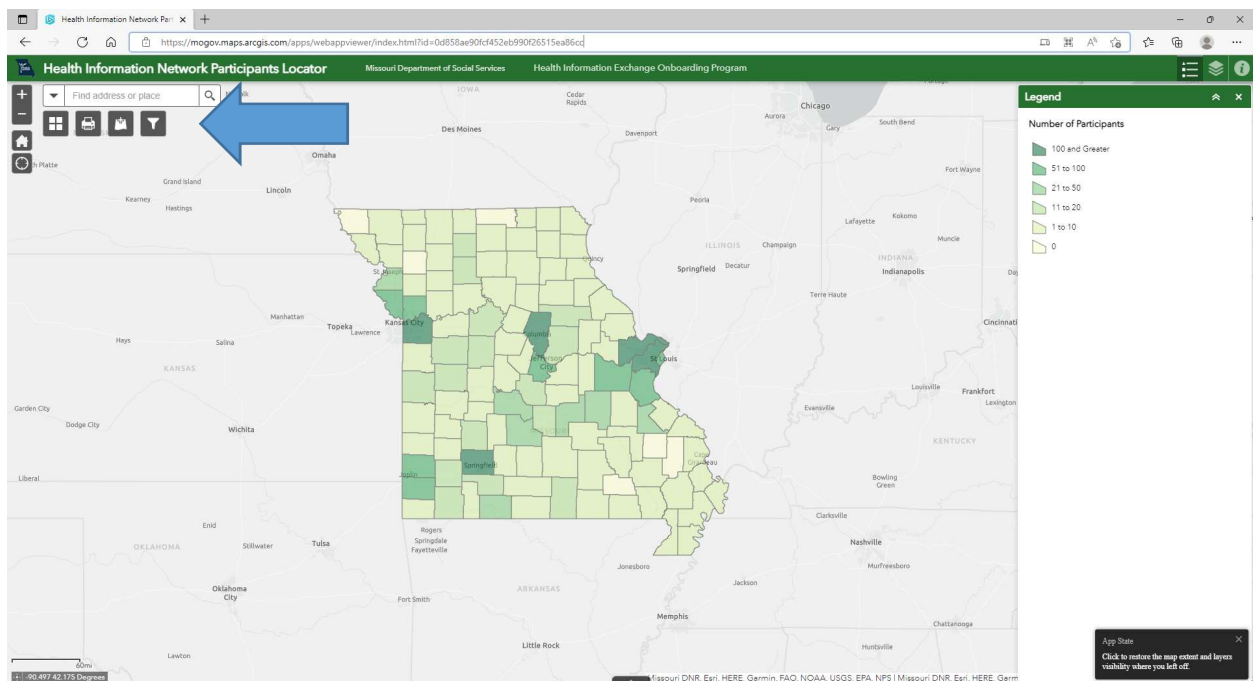
Step Three:

Click on the “i” icon in the upper right hand corner – this will display some helpful definitions and tips.

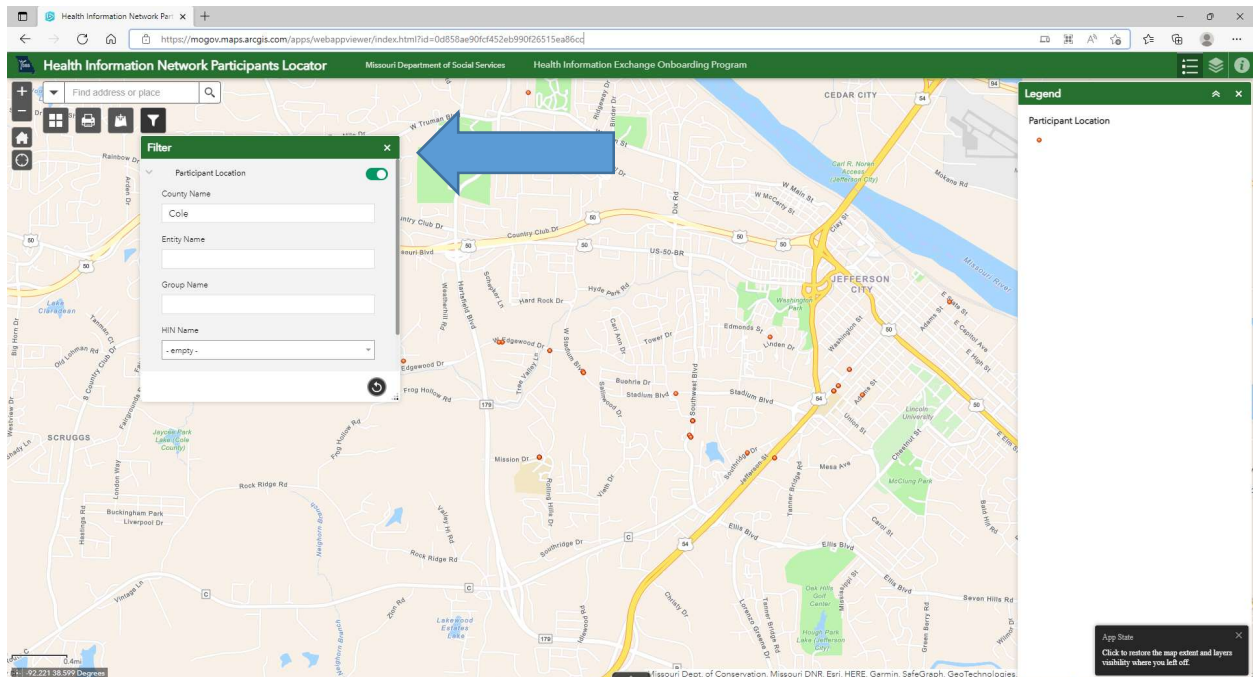


Step Four:

Click on the 'Filter' icon (see blue arrow). This is the best method to filter results in most cases.



The Filter Window will appear.



Make sure Toggle is ON

County Name, Entity Name, and Group Name may all be entered as free text. You may enter information in some or all of the fields to return results.

Entity Name: Smithville – will return all entities that contain the name ‘Smithville’.

Group Name: Saint Luke – will return all entities that are included in a group that contains ‘Saint Luke’. Note that spelling can alter results – entering Saint Luke versus St. Luke’s will get very different findings.

Example: County Name – ‘Cole’.

All results for County Name, Entity Name, and Group Name can be further filtered by HIN Name, which is a dropdown.

Example Findings:

In the example below, we have entered Cole under County Name and selected the Toggle to ON.

Open Attribute table using tab at the bottom of the map, in the center, to see a listing of the facilities in Cole County, including HIN Name (see blue arrow). You can see several different HINs are represented.

Health Information Network Participants Locator

Participant Location

County Name: Cole

Entity Name

Group Name

HIN Name: - empty -

Legend

Participant Location

Participant Location

Entity Name	Group Name	HIN Name	Category	County Name
Madison Street Obstetrics and Gynecology	Capital Region Medical Center	Tiger Institute	Physician Practice	COLE
Mid Missouri Medical Consultants	Capital Region Medical Center	Tiger Institute	Physician Practice	COLE
Missouri Heart Center - Jefferson City	Missouri Heart Center - Columbia	Tiger Institute	Physician Practice	COLE
Missouri Orthopaedic Institute at CRMC	University of Missouri Health Care	Tiger Institute	Physician Practice	COLE
Oak Tree Villas SNF	StoneBridge	Lewis and Clark Information Exchange	Long Term Care or Skilled Nursing	COLE
Preferred Family Healthcare - Jefferson City	Preferred Family Healthcare/ Clarity Health	Midwest Health Connection	Community Mental Health Center	COLE
Preferred Family Healthcare - Jefferson City	Preferred Family Healthcare/ Clarity Health	Midwest Health Connection	Community Mental Health Center	COLE
CSM Health Behavioral Health	CSM Health System	Midwest Health Connection	Community Mental Health Center	COLE

52 Features 0 selected

The Filter Window can be used to select just one HIN Name from the dropdown, as shown in the example below. The map is filtered by a HIN Name of “Midwest Health Connection”, and a smaller selection is visible in the attribute table and map.

Health Information Network Participants Locator

Missouri Department of Social Services Health Information Exchange Onboarding Program

Find address or place

Filter

Participant Location ☒

County Name
Cole

Entry Name

Group Name

HIN Name
Midwest Health Connection

Participant Location

Number of Participants

Options Filter by map extent Zoom to Clear selection Refresh

Entry Name	Group Name	HIN Name	Category	County Name
SSM Health Sleep Center	SSM Health System	Midwest Health Connection	Other Mental Health Clinic	COLE
SSM Health Spine & Pain Management Center	SSM Health System	Midwest Health Connection	Physician Practice	COLE
SSM Health Sports Medicine and Rehabilitation	SSM Health System	Midwest Health Connection	Hospital - Rehabilitation Facility	COLE
SSM Health St. Mary's Hospital - Jefferson City	SSM Health System	Midwest Health Connection	Hospital - Acute Care	COLE
SSM Health Urgent Care	SSM Health System	Midwest Health Connection	Outpatient - Urgent Care	COLE
SSM Health Wound Center	SSM Health System	Midwest Health Connection	Physician Practice	COLE
Women's Imaging Center	SSM Health System	Midwest Health Connection	Imaging Center	COLE

20 Features 0 selected

App State
Click to restore the map extent and layers visibility when you left off.

Step Five:

Click on the dot – pop up will provide more information about the location.

Health Information Network Participants Locator

Missouri Department of Social Services Health Information Exchange Onboarding Program

Find address or place

Filter

Participant Location ☒

County Name
Cole

Entry Name

Group Name

HIN Name
Midwest Health Connection

SSM Health Behavioral Health

Entry Name SSM Health Behavioral Health

Group Name SSM Health System

HIN Name Midwest Health Connection

Category Community Mental Health Center

County Name COLE

Zoom to

Participant Location

App State
Click to restore the map extent and layers visibility when you left off.

Step Six:

Export the file. Go to “Options” above the table (see blue arrow). Click on Export all to CSV.

Participant Location	Number of Participants	HIN Name	Category	County Name
Children's Center	1	Midwest Health Connection	Community Mental Health Center	COLE
Jefferson City	1	Midwest Health Connection	Community Mental Health Center	COLE
Jefferson City	1	Midwest Health Connection	Community Mental Health Center	COLE
Emergency Room at SSM Health St. Mary's Hospital - Jefferson City	1	Midwest Health Connection	Outpatient - Urgent Care	COLE
MO Primary Care Association	1	Midwest Health Connection	Community-Based Organization	COLE
Preferred Family Healthcare - Jefferson City	1	Midwest Health Connection	Community Mental Health Center	COLE
Preferred Family Healthcare - Jefferson City	1	Midwest Health Connection	Community Mental Health Center	COLE

Select the file from your Downloads list.

Downloads

Participant Location (4).csv

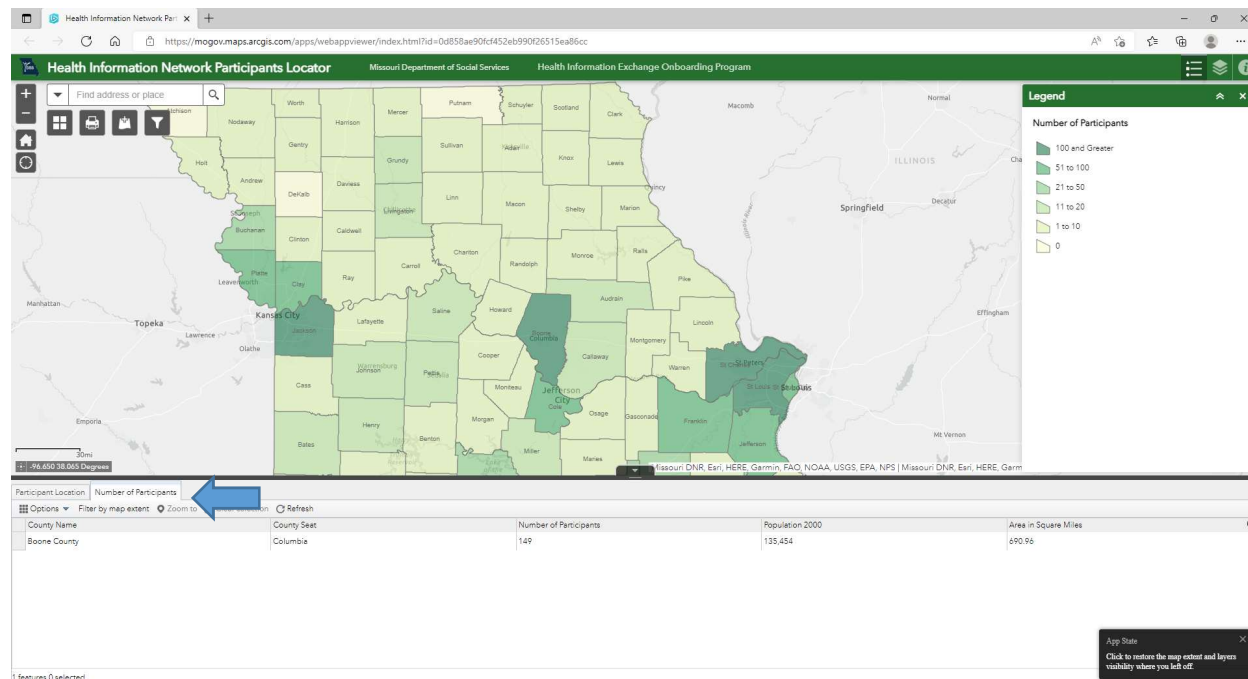
[Open file](#)

[See more](#)

The data returned will be in CSV format and will contain geographic information for other mapping projects if desired.

Step Seven:

Note that the attribute table has two tabs. One will show the Number of Participants (see below).



The Participant Location tab contains more data, including data that is useful when downloaded, as described above.

